

Want to begin a career in lashes?



elleebana

EYELASH EXTENSIONS

*Lash artistry for Professionals*

BOOK IN FOR CLASSIC LASH EXTENSION TRAINING AT  
EFB WITH MASTER EDUCATORS FROM ELLEEBANA

## COURSE OVERVIEW:

Elleebana's Classic Lash Extensions Foundation Course arms you with excellent fundamental core lashing skills.

Our class is designed to deliver the essential techniques for safe applications of lash extensions as we guide you from your first day of training physically and then into your assessment and further supportive video links virtually.

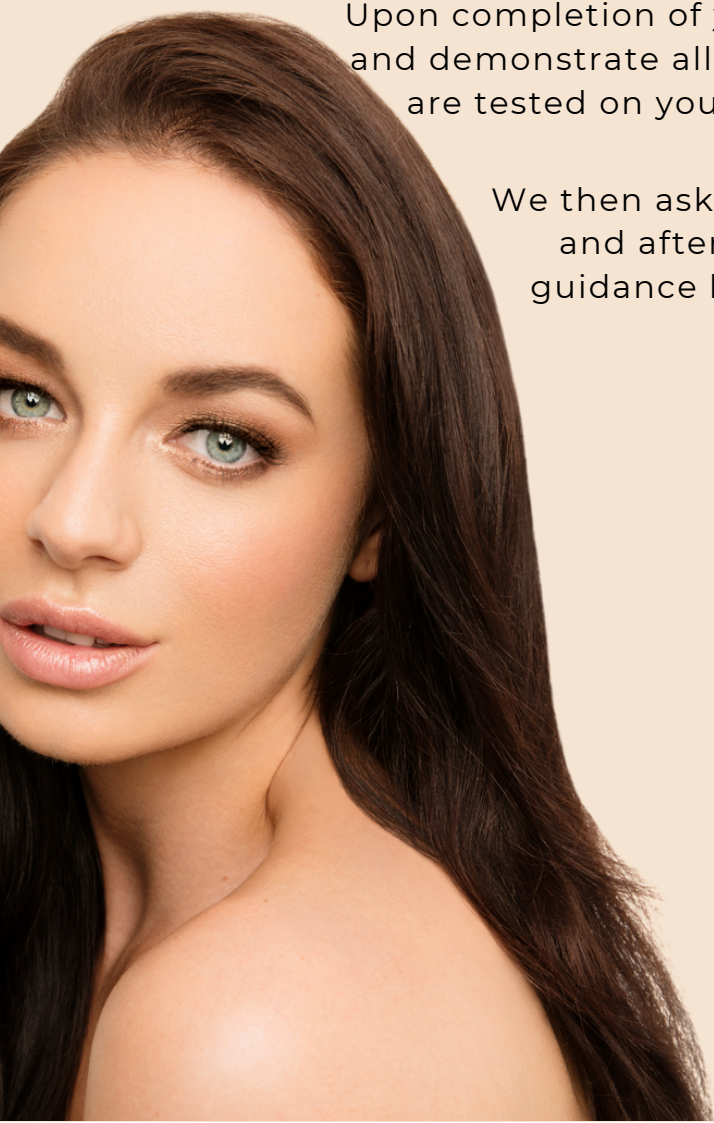
Our theory session commences with the elements required to give you a firm foundation and understanding of what is required for you to begin offering safe classic lash extensions applications.

You are guided through mannequin applications first to help build your confidence, co-ordination, hone in on your glue control and lash direction then our handpicked and passionate trainers follow you, support you and aide you while you begin your first lashing experience on your model.

Upon completion of your first day you are required to know and demonstrate all techniques from our criteria form and are tested on your knowledge retention with a quiz.

We then ask you to practise and submit your before and after images for assessment and careful guidance before you are issued your certificate.

Class will be held at  
EFB SALON SUPPLIES  
112 Northgate Drive  
Thomastown VIC 3074



elleebana



## TOPICS WE COVER:

### KNOWLEDGE:

- Learn how to offer safe lash extensions treatments
- Learn the difference between lashes – sizes, shapes and styles
- Understand lash extensions adhesives and the chemistry of these products
- Gain knowledge on lash pH and how primers and lash prep products effect results
- Correct lash consultation procedures
- Correct aftercare for your client's lashes
- Lash styling that is complimentary for your clients

### SKILL:

- How to create a natural classic lash extension application
- Identify client's eye shapes
- Create visual differences to the shape of the eye from basic lash styling
- Lash with confidence
- Lash mapping
- Eye proportions
- Learn how to perform infills
- Lash methodically and build your speed and technique as well as understand how to practise your skills even without a model
- Apply lashes using varied styles
- Create symmetry
- How to safely remove lash extensions

### BUSINESS:

- Learn about your income potential when offering lash extensions
- Potential profit from your Elleebana lash extensions kit is \$11,550 and how the contents breakdown is made
- Adhere to your local regulations for safety and sanitation
- Understand how to correctly troubleshoot with your clients
- Learn how to gain your certificate and credibility for your skill



elleebana



## COURSE PRICE:

**\$500 Inclusive of GST**

\$150 non-refundable booking fee applies and is included in the above-mentioned price.

Full payment is required 2 Fridays prior to training to secure your position at a class.

## COURSE INCLUSIONS:

**Full sized Elleebana Lash Extensions Kit valued at \$450.**

Over 9000 lash extensions in curls, lengths and thicknesses that you will use. This kit will enable you to offer around 100 applications of lash extensions (with the exception of the adhesive if this is not used within the expiry).

You will also receive an instructional copyrighted manual, a criteria checklist to review your new found skills and to be assessed on your skills by your trainer, a fund lash quiz, access to promotional flyers, promotional images and a promotional poster all on a virtual file for printing or use on your social pages and finally your certificate upon submission of a minimum of 5 before and after images that are successful.



elleebana



## IMPORTANT TIMES:

Our lash extensions class begins at 9:30am and finishes at 4:45pm.

You then will have three months to submit your before and after images for assessment.

Lunch breaks from 12:45pm – 1:15pm with a tea and toilet break at 11:00am for 15 minutes.

We have a lot to cover and we are extremely passionate about you getting the most from this class so please be prepared and bring a packed lunch or alternatively we have a great café right next door

## MODEL REQUIREMENTS:

You are required to provide your own model  
at 1:15pm through till 4pm.

Please check your model has no contra-indications  
to lash extensions.

## IMPORTANT NOTES:

We offer this course as a beginners course so that you can experience and be guided in your first lashing experience.

We don't leave you to your own devices after that first day – you are welcome to call and contact us after your day of training with any questions that you might have and the correspondence continues as you submit your before and after images for assessment.

## PLEASE NOTE:

1. \$150 non-refundable Booking Fee applies for each individual cancellation OR no show
2. Full payment is required to secure a student's position at a course.
3. We reserve the right to withhold issuing of a certificate until competency has been achieved
4. We request that if you are feeling unwell or have COVID19 symptoms to contact us and reschedule your training.

## HOW TO BOOK IN:

- **ONLINE**

Go to [www.efbdirect.com.au/shop/product-category/classes/](http://www.efbdirect.com.au/shop/product-category/classes/)  
Select the class you wish to book and have the option to pay with Afterpay or Paypal

- **IN SHOWROOM**

Come and visit our friendly staff in showroom located at 112 Northgate Drive, Thomastown VIC 3074 and book in your training

- **PHONE**

Call the EFB staff on (03) 9464-4466 to book in your training

